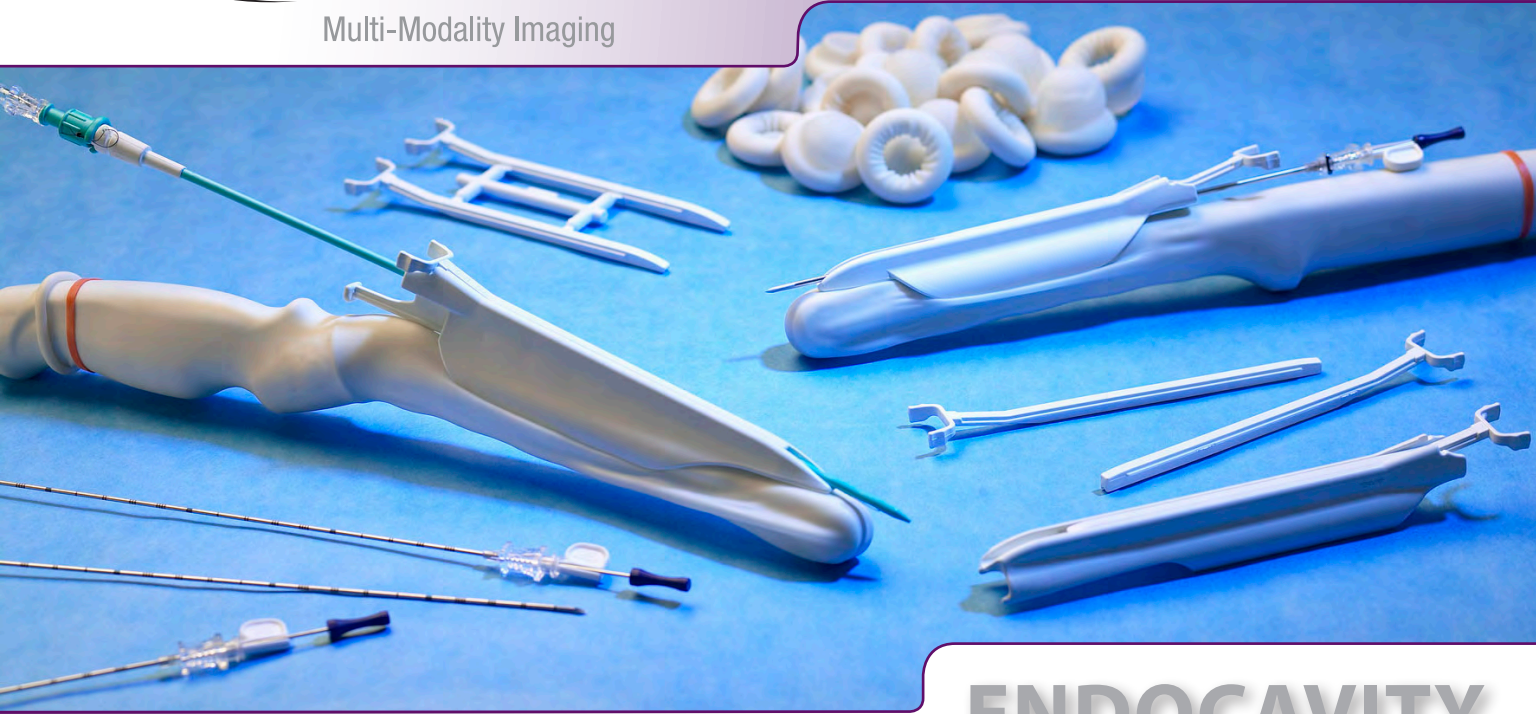




CIVCO
MEDICAL SOLUTIONS

Multi-Modality Imaging



Safe. Efficient. Guiding Patient Care.

**ENDOCAVITY
QUICK-RELEASE**

1



Note: Refer to the American Institute of Ultrasound in Medicine's Ultrasound Practice Report for proper covering of transducers during endocavitary scanning

cover up

CIVCO makes it easier to reduce infection rates and cross-contamination with latex or latex-free endocavity cover solutions. Choose from Latex, NeoGuard™ or CIV-Flex™ covers to ensure protection of patient, clinician and ultrasound equipment.

safe. efficient. gu

Four steps for clinical confidence

3

attach guide

Using proper sterile technique, align disposable quick-release guide to transducer locating features with a single-click.



2

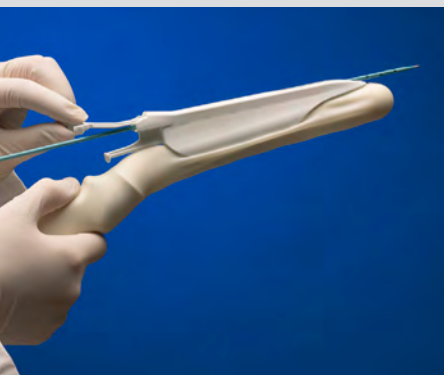
gauge selection

Select proper gauge size for target application. Packaged in a convenient procedure kit, select from 10-11GA (drainage catheter), 14GA (device placement) and 16-18GA (tissue biopsy) inserts.



Guiding patient care.

in ultrasound-guided endocavitary procedures



4

quick-release

Once the procedure device is in proper position (for fluid collection or placement of device) the insert can be released from the guide channel by simply sliding out the insert tab and retracting the insert. Catheters or other devices may be safely left in the patient while the transducer and guide are removed from the body.

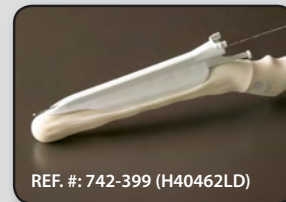
Providing a New Dimension in Ultrasound Guidance

Now available for leading ultrasound equipment manufacturers, including: GE Healthcare & Philips

REF. #	Product Description	Qty.
742-399	GE Healthcare E8C - Sterile quick-release endocavity needle guide with 2.6 x 20cm (1" x 7.9") latex cover and 3.5 x 20cm (1.4" x 7.9") latex cover (Ref.# 134-127)	24
667-108	Philips C8-4v - Sterile quick-release endocavity needle guide with 2 x 20cm (1" x 7.9") latex cover and 3.5 x 20cm (1.4" x 7.9") latex cover (Ref. # 134-161)	24
667-125	Philips C9-4v - Sterile quick-release endocavity needle guide with 2 x 20cm (1" x 7.9") latex cover and 3.5 x 20cm (1.4" x 7.9") latex cover (Ref. # 134-167)	24



Scan the QR Code to request a free sample
or visit WWW.CIVCO.COM for new product
releases and transducer compatibility



To request a complimentary sample call 319.248.6757 or visit WWW.CIVCO.COM.



Safe. Efficient. Guiding Patient Care.

This new versatile guide provides physicians with a tool for performing deep perirectal abscess drainage, tissue biopsy and larger gauge device placement. The innovative design offers quick and easy removal of probe while the needle or catheter remains positioned in the body. The single-use design prevents the risks associated with cross-contamination.

Post Operative Abscess: Catheter Placement Using an Endocavity Quick-Release Guide



Figure 1: (CT Image) Patient with post operative abscess (A) anterior to the rectum

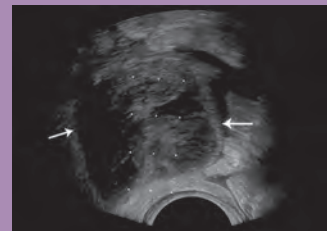


Figure 2: The endocavity transducer with guidance attachment is placed in the rectum and the abscess cavity is visualized (arrows). Note software guidelines identifying the path of catheter placement.

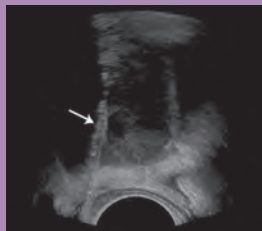


Figure 3: The catheter (arrow) is identified entering abscess cavity.

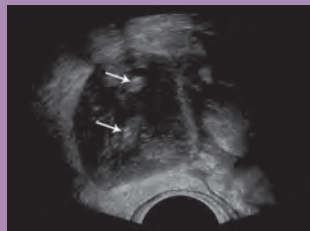


Figure 4: Once the trocar catheter has been placed then the inner stylet is removed and the pigtail catheter is reformed. Portions of the pigtail catheter are visualized (arrows) within the abscess cavity.



Figure 5: (CT Image) CT obtained after catheter placement demonstrates the reformed pigtail catheter (arrow) within a smaller abscess cavity. (B = bladder) (R = rectum).

Safe. Efficient. Guiding Patient Care.

Placing an Order

Contact a CIVCO customer service specialist to place an order or request a product sample:

Toll-free within the U.S. and Canada: 800.445.6741

Toll-free Facsimile: 877.329.2482

Direct Dial: 319.248.6757

Facsimile: 319.248.6660

E-mail: info@civco.com

WWW.CIVCO.COM

